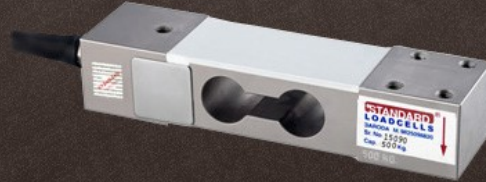


Regular-410 Platform Scale Load Cell



Regular 410 is a Single point parallel beam, low profile Platform steel loadcell. It is made from high tool steel alloy with Electroless nickle plating for protecting loadcells from jerk loads & corrosion. Its high tool steel construction make loadcell very Rugged to absorb shock loads.

Features

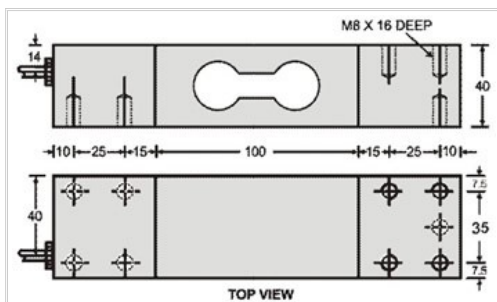
- ◆ High Tool steel Construction makes it very rugged for shock loads and is suitable in harsh application
- ◆ Supports the Platform size up to 750X750(mm)
- ◆ Available from 200 kg. to 1500 kg. capacities
- ◆ Single Point Capability for Platform Scale
- ◆ Minimum error for Off-Centre loading
- ◆ Low profile
- ◆ Also available in Stainless Steel
- ◆ Suitable for hygienic applications like Food, Dairy & Pharmaceutical Industries

Application

- ◆ Electronic scales
- ◆ Platform scales-medium size
- ◆ Baggage weighing
- ◆ Hopper weighing
- ◆ Industrial weighing systems

Standard Capacities (Kg.)

200, 300, 500, 750, 1000, 1500



Standard Specification :

Nominal Output	2.0mV / V (mili Volt per Volt)
Excitation Voltage	10 VDC - Maximum 15 VDC
Platter Size	750mm x 750mm
Bolt Distance for fitting	35mm x 25mm
Safe Load	150% of Rated Capacity
Ultimate Load	200% of Rated Capacity
Non Linearity	<±0.025% of FSO (Full Scale Output)
Creep (30 minutes)	<±0.025% of FSO
Zero Balance	<±1% of FSO
Input Resistance	396 ± 10 ohms
Output Resistance	350 ± 5 ohms
Temperature Compensation	0°C to +60°C
Material	Electroless Nickle Plated Tool Steel